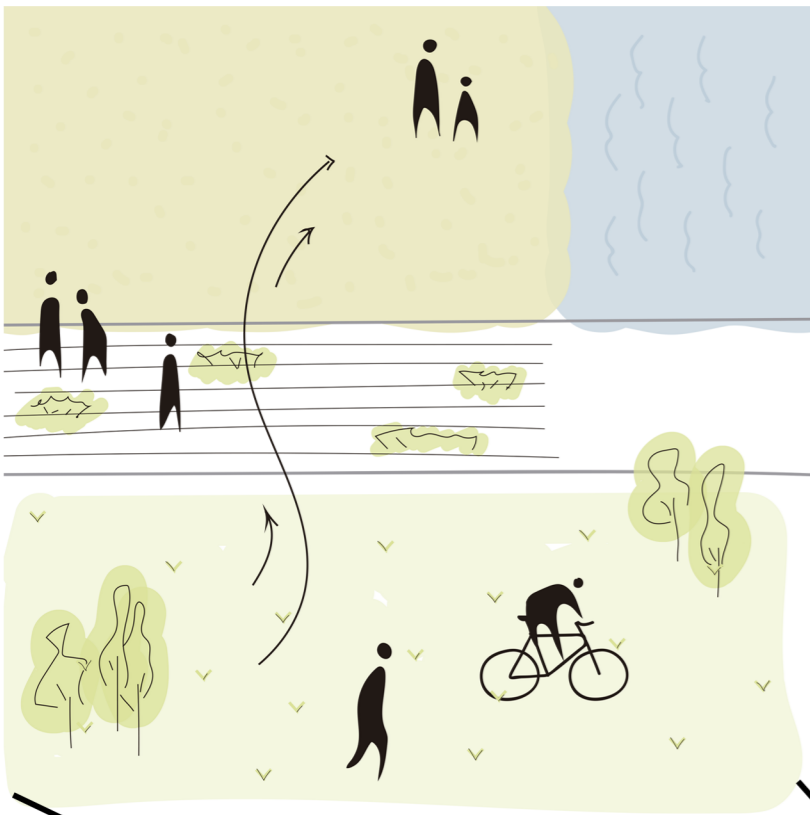


## CONNECTION :

Improve the connection between the Marina and the beach



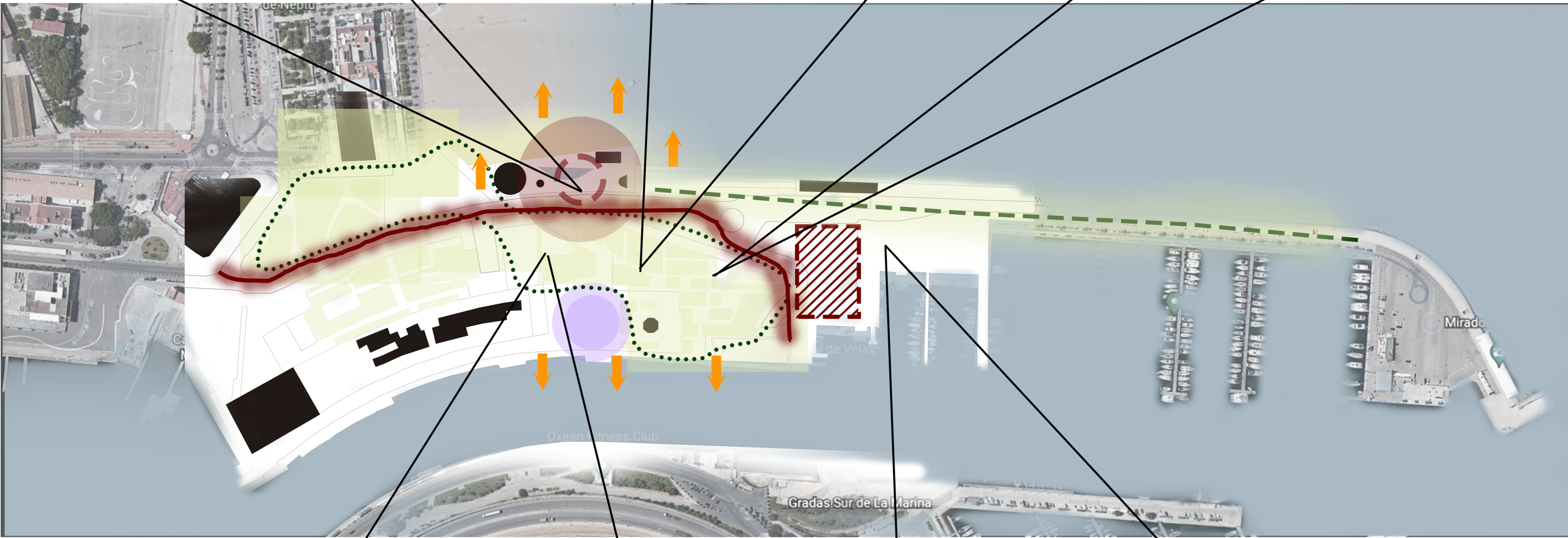
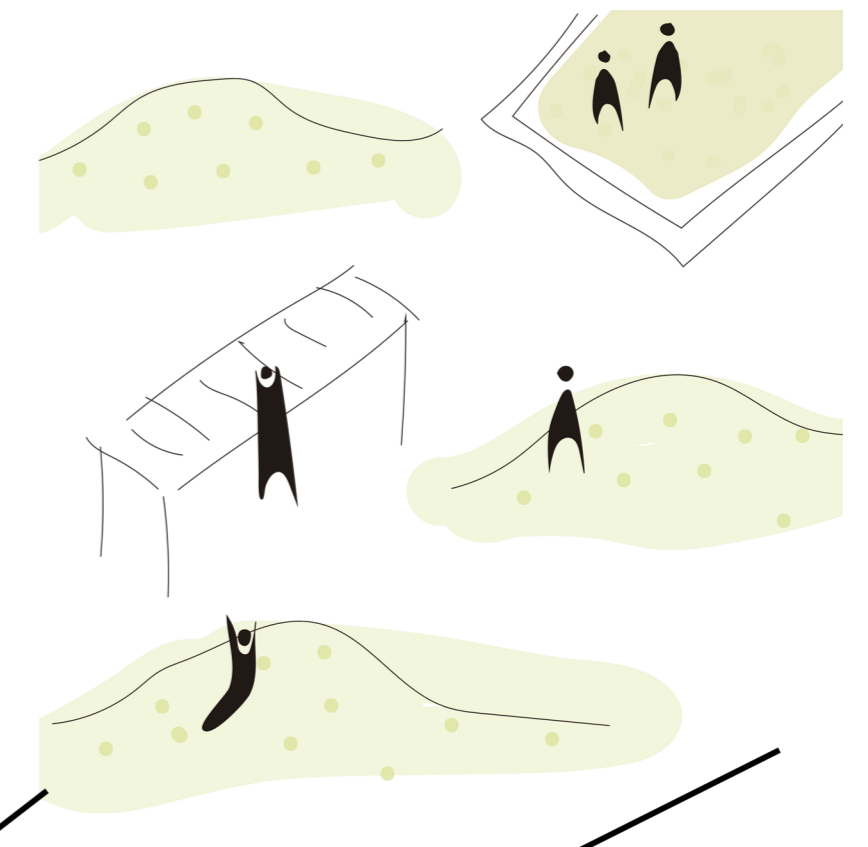
## PATHS:

Improve biking an walking paths



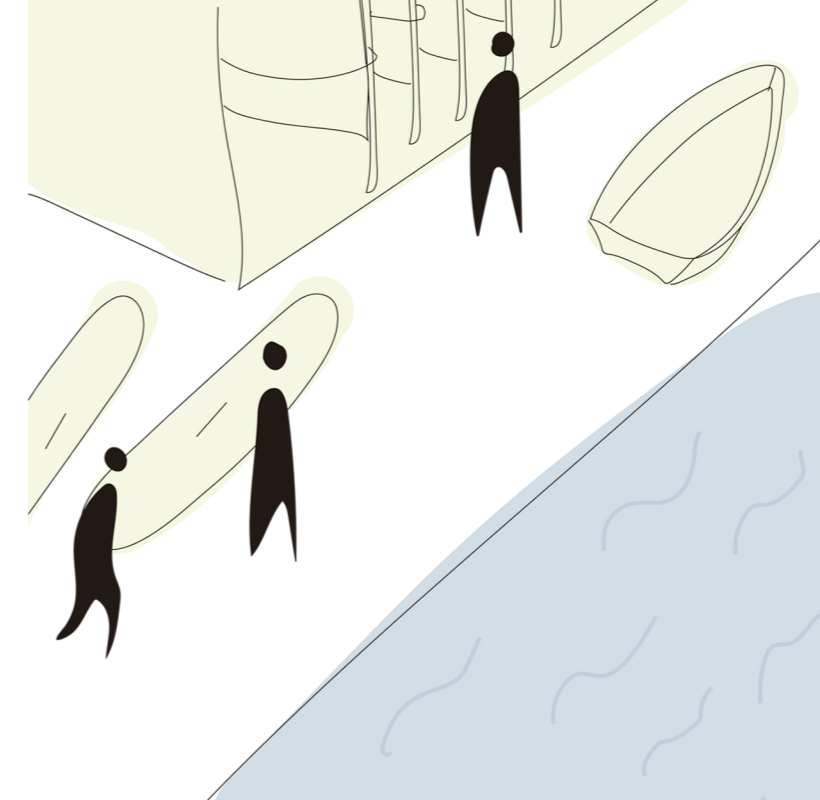
## PLAYGROUND:

Recreation and play areas for children



## SPORTS:

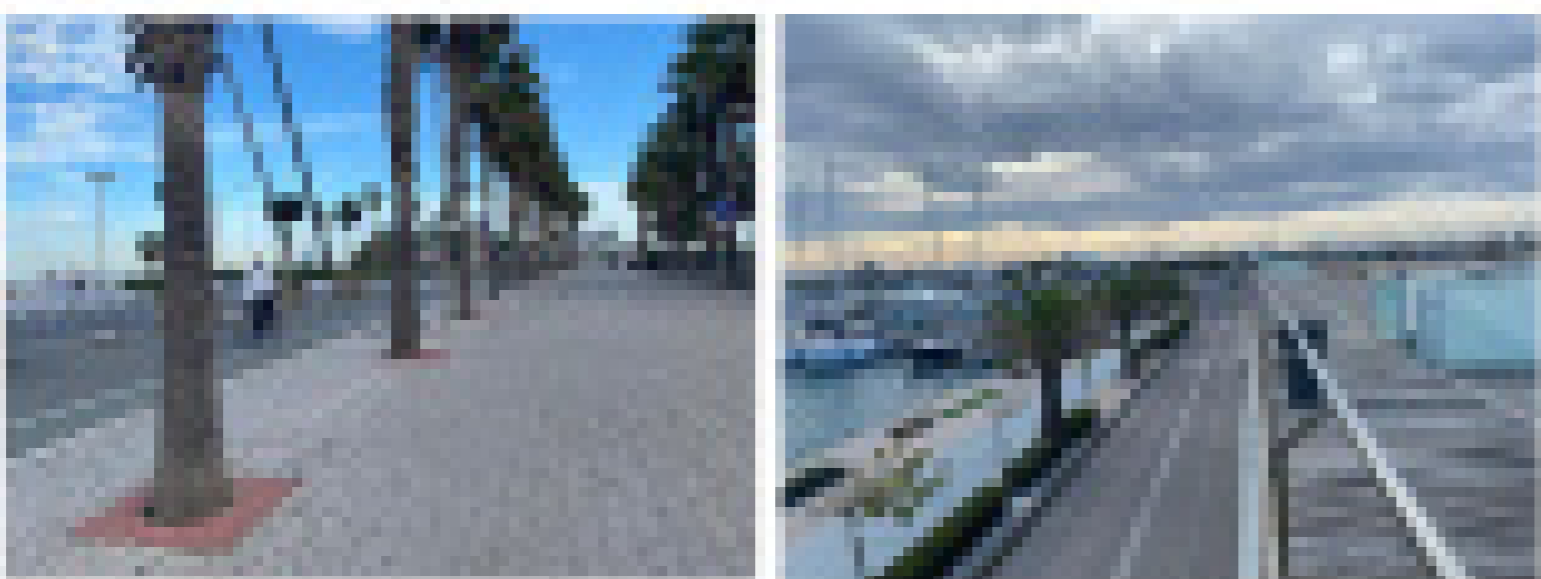
More open sports facilities with better conditions



## WATER SPORTS:

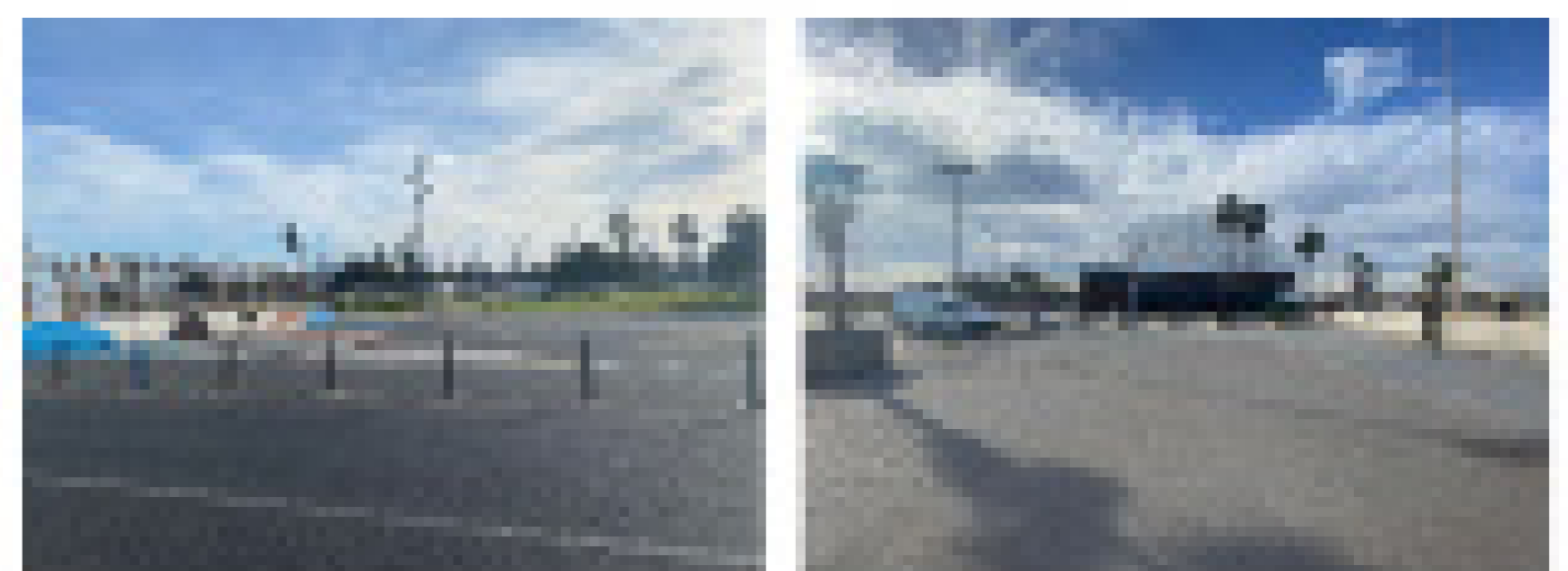
Improving the connection to the water and storage of equipment

## STRENGTHS



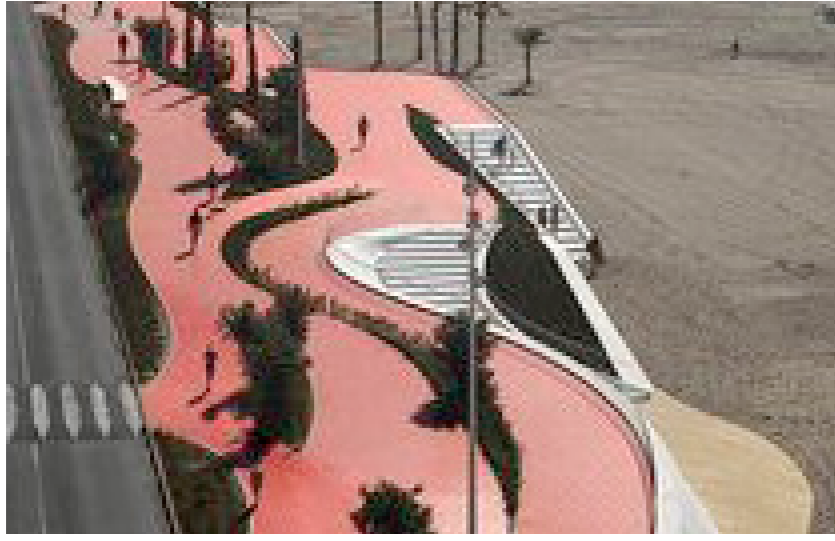
Located in a privileged place next to the port and Las Arenas beach.  
Well communicated to the city with different possibilities of transport.  
Wide variety of restaurants and social activities

## WEAKNESSES



Lack of urban order in terms of the union and communication between spaces.  
The Marina Beach club blocks the views from the promenade

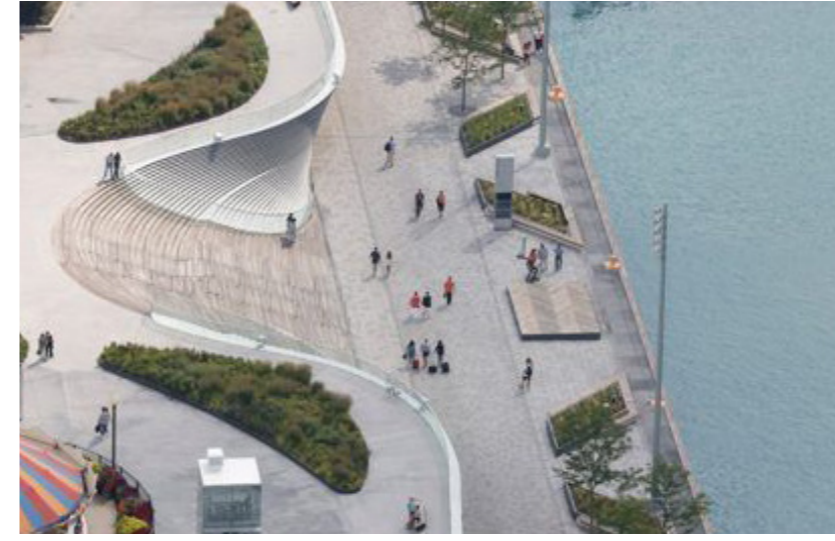
## MASTERPLAN WITH THE REFERENCES



CONNECTING BEACH TO THE MARINA



NEW SPORTS AREA



CONNECTING BEACH TO THE MARINA



ADDING GREENERY TO WALKING PATHS



ACTIVATING THE ROOF



CONNECTING TO THE SEA



NEW PLAYGROUND AREA



CONNECTING TO THE SEA

## SKETCHES OF PROPOSED AMBIENTS



Sports and recreational space that shows the organic shapes of the elements that serve as seats and garden areas for the vegetation.



Cultural zone where concerts can be held, the place has become very green and alive.



The promenade zone continuing the organic elements of greenery enriched with additional seating



The parking lot from an unpleasant space turned into a complex that gained curtains creating the necessary shade.